

Model i400 & i400p Integral Preamp Sensor

Electrical Specifications:

Supply Voltage (Vs): 15 to 30 VDC 250 kHz High pass filtering (6 pole)

Gain: 50db nominal Output Impedance: 50 Ohm

Temp Range: - 10 to 95°C Noise < 10mV

i400p: Specs same as above except preamplifier shunt allows remote crystal pulsing when Vs<17VDC (200 V p-p limit for pulsing)

Mechanical Specifications:

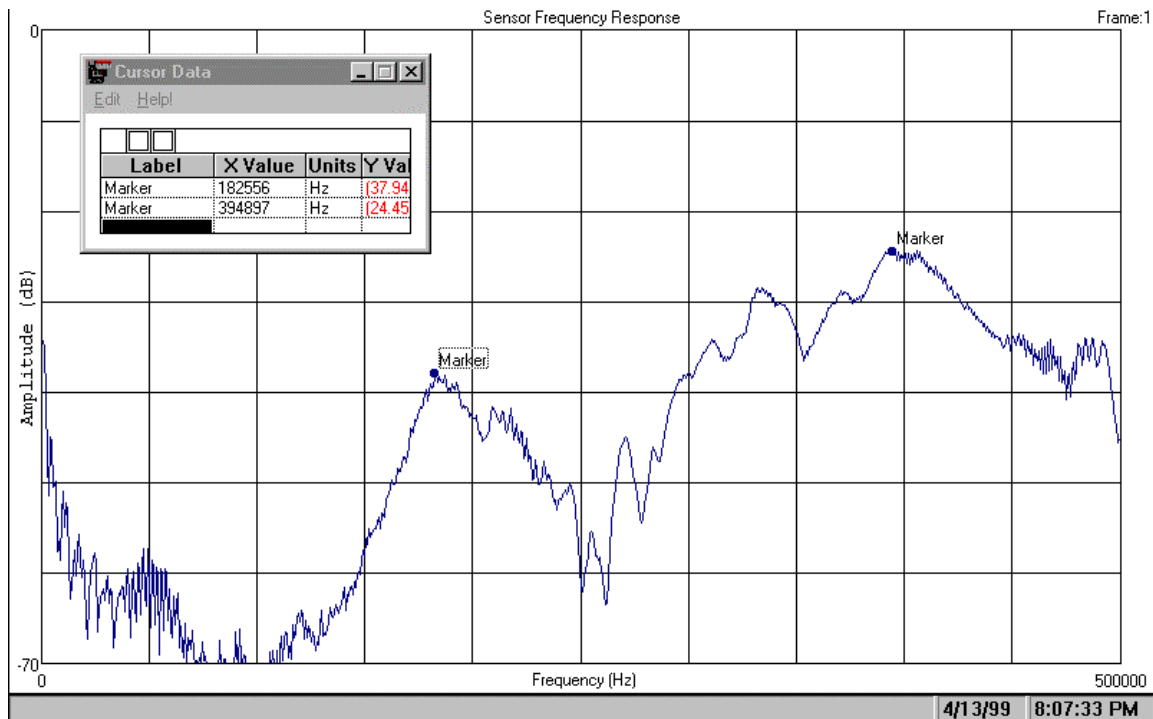
Dimensions: 1 1/8" dia x 1 3/5" h Weight: 3.7 oz (105 gms)
(28 mm x 40 mm)

All Stainless steel construction with electrically isolating epoxy face

Connector: Side-mount Female BNC



Typical Face to Face Sensor Spectral Response:



Source Crystal: Panametrics V101

Source Voltage: Swept 11 - 495 kHz

Sweep Rep Rate = 10 mSec

Input Signal $V_{RMS} = 0.141$